



# G1569-01

## High Performance Current Mode PWM Switch

ANALOG PWM IC

### 1. General Description

The G1569-01 is a high performance AC/DC power supply Switch for battery charger and adapter applications requirements up to 36W in an open frame design. It can meet less than 80 mW standby power.

G1569-01 is a current mode PWM Switch with a high voltage power MOSFET. It operates in fixed frequency which is precisely set internally. It could operate in Extended Burst Mode at no load or light load, in which mode switching loss is minimized and the frequency is adjusted internally. To ensure that power supplies work quietly, the frequency is set beyond 20 KHz.

Small current is needed when G1569-01 starts up and works, thus a large value resistor could be used in the startup circuit to minimize the standby power. Slope compensation circuit is integrated in G1569-01, which improves system large signal stability and reduces the possible sub-harmonic oscillation at high PWM duty cycle.

Frequency shuffling technique is integrated in G1569-01, which helps to achieve excellent EMI performance.

G1569-01 offers complete protection functions including cycle-by-cycle current limiting protection(OCP), over load protection(OLP), VDD over voltage protection(OVP), VDD over voltage clamp and under voltage lockout(UVLO).

The G1569-01 is available in DIP7 package.

### Features

- ◆ Built-in Soft Start
- ◆ Random Frequency Adjustment to Reduce System EMI
- ◆ Audio Noise Free Operation
- ◆ Internal Cable Compensation
- ◆ Extended Burst Mode Control For Improved Efficiency and Minimum Standby Power Design
- ◆ Internal Synchronized Slope Compensation
- ◆ Low VDD Startup Current and Low Operating Current
- ◆ Leading Edge Blanking on Current Sense Input
- ◆ Over Load Protection(OLP) and Cycle-by-Cycle Current Limiting Protection(OCP)
- ◆ Over Voltage Protection (OVP), Under Voltage Lockout Protection (UVLO) and Over Voltage Clamp

### Applications

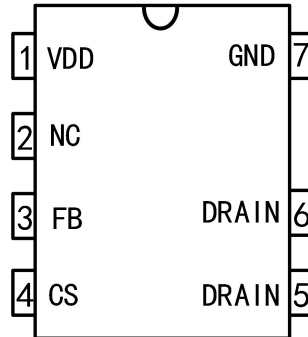
- Offline AC/DC flyback converter
- Power Adapter
- Set-Top Box Power Supplies
- Open-frame SMPS
- Auxiliary Power Supply for PC and Server
- Digital Cameras and Camcorder Adapter

# G1569-01

## High Performance Current Mode PWM Switch

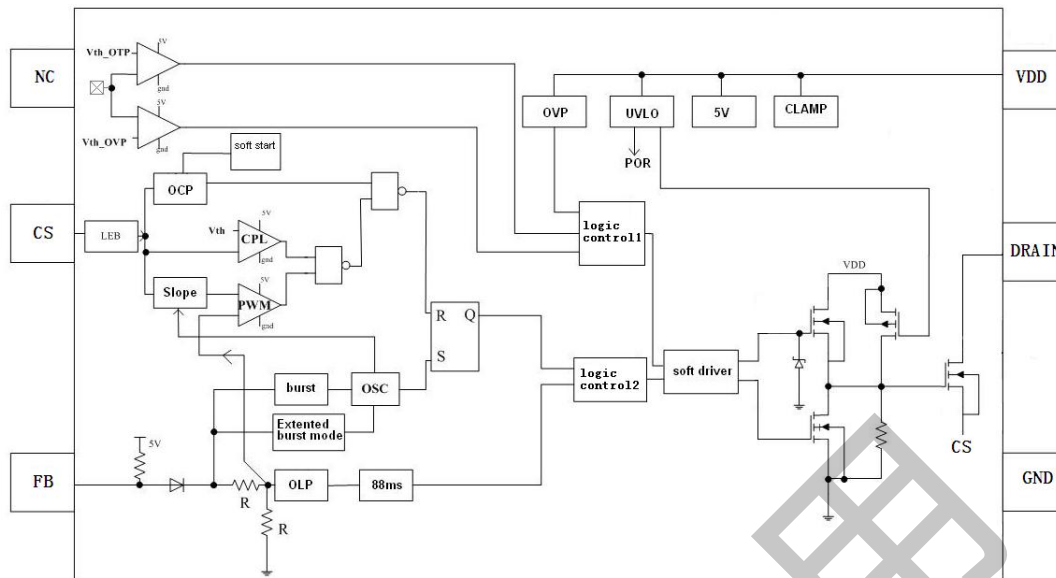
### 2. Products Information

#### 2.1 Pin configuration



Pin Name	I/O	Description
VDD	P	Power Supply
NC	-	Unconnected Pin
FB	I	Feed Back Input Pin
CS	I	Current Sense Input Pin
DRAIN	O	HV MOSFET Drain Pin. The Drain pin is connected to the primary lead of the transformer.
GND	P	Ground

### 2.2 Block diagram



### 2.3 Output Power Table

Product	230VAC $\pm$ 15%	85~265VAC
	Adapter <sup>1</sup>	Adapter <sup>1</sup>
G1569-01	30W	25W

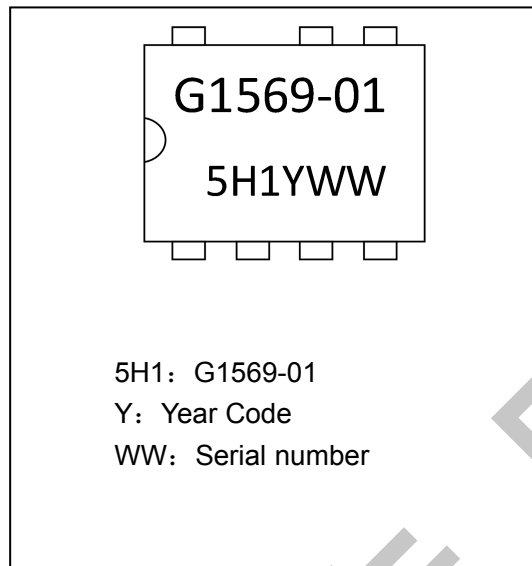
Notes:1.Maximum practical continuous power in an Adapter design with sufficient drain pattern as a heat sink, at 50°C ambient. Higher output power is possible with extra added heat sink or air circulation to reduce thermal resistance.

# G1569-01

## High Performance Current Mode PWM Switch

### 2.4 Ordering Information

Part Number	Marking ID	Package	Packing
G1569-01	G1569-01	DIP7	50/Tube



#### Year Code

A	B	C	D	E	F	G	H	I	J	K	L	M
2013	2014	2015	2016	2017	2018	2019	2020	2021	2022	2023	2024	2025
N	O	P	Q	R	S	T	U	V	W	X	Y	Z
2026	2027	2028	2029	2030	2031	2032	2033	2034	2035	2036	2037	2038

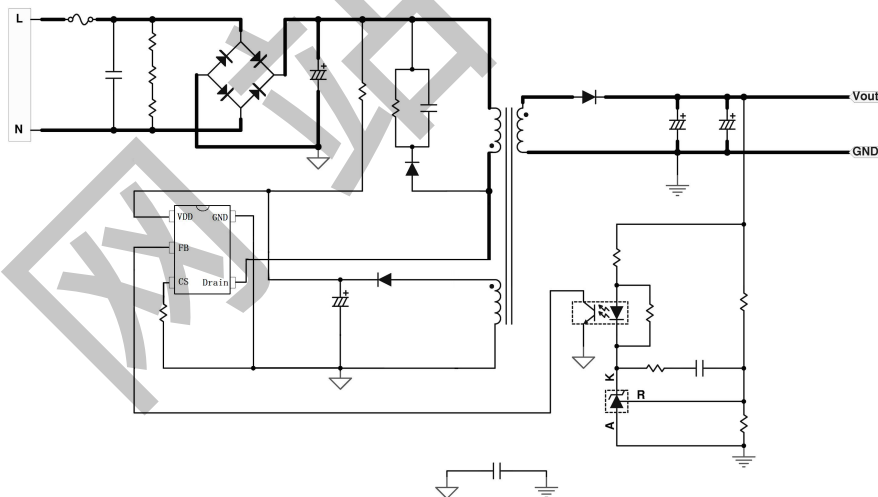
### 3. Absolute Maximum Ratings

Description	Absolute Maximum Ratings
Drain Voltage (off state)	-0.3 to BVdss
Continuous Drain Current at Tc=25°C	4A
Continuous Drain Current at Tc=100°C	2.5A
Pulsed Drain Current note1	16A
V <sub>DD</sub>	-0.3 to VDD Clamp
Supply Current I <sub>VDD</sub>	10 mA
FB Input Voltage	-0.3 to 7V
CS Input Voltage	-0.3 to 7V
Min/Max Operating Junction Temperature T <sub>J</sub>	-40 to 150 °C
Min/Max Storage Temperature T <sub>STG</sub>	-55 to 160 °C
Package Dissipation R <sub>θJA</sub>	75 °C/W

Note1: Repetitive Rating: Pulse width limited by maximum junction temperature

### 4. Typical Application

The G1569-01 series contains a Switch for a flyback circuit.



## 5. Electrical Characteristics

(TA = 25°C, VDD=16V, unless otherwise noted)

Symbol	Parameter	Test Conditions	Min	Typ	Max	Unit
<b>Supply Voltage</b>						
I <sub>VDD_ST</sub>	V <sub>DD</sub> Start up Current	V <sub>DD</sub> =14V, Measure Leakage current into V <sub>DD</sub>	-	3	10	μA
I <sub>operate</sub>	Operation Current	V <sub>FB</sub> =3V	-	1.6	2.5	mA
V <sub>UVLO(off)</sub>	V <sub>DD</sub> Under Voltage Lockout exit	-	14.5	15.5	16.5	V
V <sub>UVLO(on)</sub>	V <sub>DD</sub> Under Voltage Lockout enter	-	8	9	10	V
V <sub>DD_CLAMP</sub>	V <sub>DD</sub> clamp	I <sub>DD</sub> =10mA	30	31	32	V
V <sub>DD_OVP</sub>	V <sub>DD</sub> ovp	-	27	28	29	V
<b>Feedback</b>						
V <sub>FB_OPEN</sub>	V <sub>FB</sub> Open Loop Voltage	-	4.5	5	-	V
D <sub>MAX</sub>	Max duty cycle	V <sub>DD</sub> =14V, V <sub>FB</sub> =3V, V <sub>CS</sub> =0V	65	72	80	%
I <sub>FB_SHORT</sub>	FB pin short circuit current	-	-	0.3	-	mA
V <sub>Ref_burst_H</sub>	The threshold exit burst mode	-	-	1.2	-	V
V <sub>Ref_burst_L</sub>	The threshold enter burst mode	-	-	1.1	-	V
V <sub>TH_PL</sub>	Power Limiting FB Threshold	-	-	3.7	-	V
T <sub>D_PL</sub>	Power limiting Debounce time	-	80	88	96	ms
Z <sub>FB_IN</sub>	Input Impedance	-	-	16	-	KΩ
<b>Current Sense</b>						
SST	Soft start time	-	-	6	-	ms
T <sub>LEB</sub>	Leading edge blanking time	-	-	300	-	ns
Z <sub>CS_IN</sub>	Input Impedance	-	-	40	-	KΩ
V <sub>TH_OC</sub>	Internal Current Limiting	-	0.72	0.75	0.78	V
<b>Oscillator</b>						
F <sub>OSC</sub>	Normal Oscillation Frequency	V <sub>FB</sub> =3V, V <sub>CS</sub> =0V	60	65	70	KHz
ΔF <sub>OSC</sub>	Jitter frequency	-	-4	-	4	%
ΔF <sub>Temp</sub>	Frequency Temperature Stability	-	-	1	-	%
ΔF <sub>VDD</sub>	Frequency Voltage Stability	-	-	1	-	%
F <sub>BURST</sub>	Burst Mode Base Frequency	-	-	22	-	KHz
<b>Mosfet Section</b>						
BV <sub>dss</sub>	Mosfet Drain-Source Breakdown Voltage	I <sub>D</sub> =250uA	650			V
R <sub>dson</sub>	Static drain to source on resistance	V <sub>GS</sub> =10V, I <sub>D</sub> =2A		1		Ω

Note: These parameters are not 100% tested, guaranteed by design and characterization.



**6. CHARACTERIZATION**

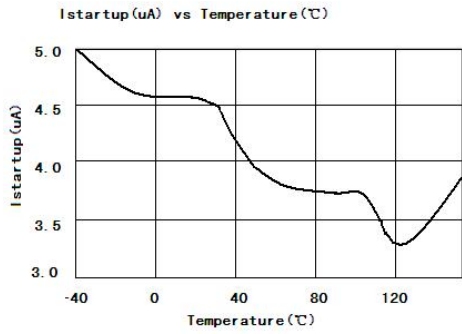


Figure 6.1 Istartup(  $\mu$  A) vs Temperature( $^{\circ}$ C)

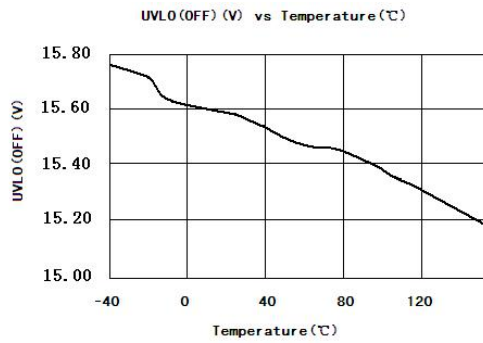


Figure 6.2 UVLO(OFF)(V) vs Temperature( $^{\circ}$ C)

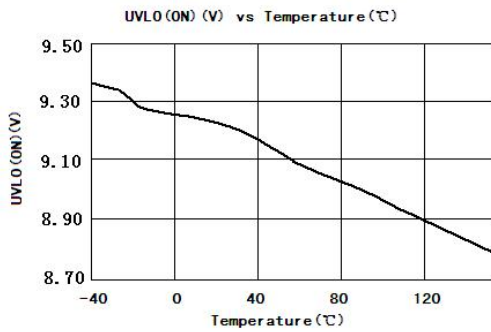


Figure 6.3 UVLO(ON)(V) vs Temperature( $^{\circ}$ C)

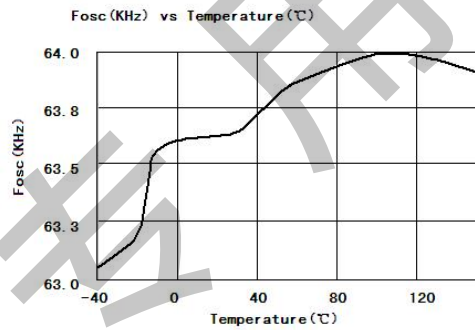


Figure 6.4 Fosc(KHz) vs Temperature( $^{\circ}$ C)

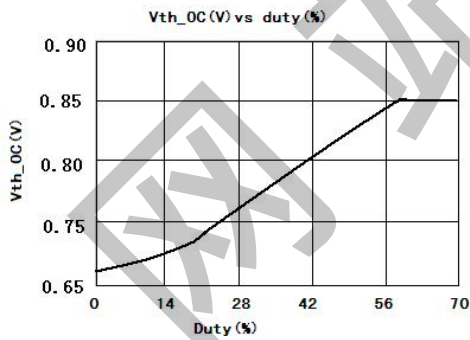


Figure 6.5 Vth\_OC(V) vs Temperature( $^{\circ}$ C)

### 7. OPERATION DESCRIPTION

The G1569-01 is a low power off-line SMPS Switch optimized for off-line flyback converter applications in up to 36W power range. The 'Extended burst mode' control greatly reduces the standby power consumption and helps the design easily to meet the international power conservation requirements.

#### • Startup Current and Start up Control

Startup current of G1569-01 is designed to be very low so that VDD could be charged up above UVLO threshold level and device starts up quickly. A large value startup resistor can therefore be used to minimize the power loss yet achieve a reliable startup in application. For AC/DC adapter with universal input range design, a 2 M $\Omega$ , 1/8 W startup resistor could be used together with a VDD capacitor to provide a fast startup and yet low power dissipation design solution.

#### • Operating Current

The Operating current of G1569-01 is low at 1.8mA. Good efficiency is achieved with G1569-01 low operating current together with the 'Extended burst mode' control features.

#### • Soft Start

G1569-01 features an internal 4ms soft start to soften the electrical stress occurring in the power supply during startup. It is activated during the power on sequence. As soon as VDD reaches UVLO(OFF), the CS peak voltage is gradually increased from 0.15V to the maximum level. Every restart up is followed by a soft start.

#### • Frequency shuffling for EMI improvement

The frequency Shuffling (switching frequency modulation) is implemented in G1569-01. The oscillation frequency is modulated so that the tone energy is spread out. The spread spectrum minimizes the conduction band EMI and therefore eases the system design.

#### • Extended Burst Mode Operation

At light load or zero load condition, most of the power dissipation in a switching mode power supply is from switching loss on the MOSFET, the core loss of the transformer and the loss on the snubber circuit. The magnitude of power loss is in proportion to the switching frequency. Lower switching frequency leads to the reduction on the power loss and thus conserves the energy.

The switching frequency is internally adjusted at no load or light load condition. The switch frequency reduces at light/no load condition to improve the conversion efficiency. At light load or no load condition, the FB input drops below burst mode threshold level and device enters Burst Mode control. The Gate drive output switches only when VDD voltage drops below a preset level and FB input is active to output an on state. Otherwise the gate drive remains at off state to minimize the switching loss and reduces the standby power consumption to the greatest extend. The switching frequency control also eliminates the audio noise at any loading conditions.





**• Oscillator Operation**

The switching frequency of G1569-01 is internally fixed at 65KHZ. No external frequency setting components are required for PCB design simplification.

**• Current Sensing and Leading Edge Blanking**

Cycle-by-Cycle current limiting is offered in G1569-01 current mode PWM control. The switch current is detected by a CS resistor into the CS pin. An internal leading edge blanking circuit chops off the CS voltage spike at initial internal power MOSFET on state due to snubber diode reverse recovery and surge gate current of power MOSFET so that the external RC filtering on CS input is no longer needed. The current limiting comparator is disabled and cannot turn off the internal power MOSFET during the blanking period. The PWM duty cycle is determined by the current sense input voltage and the FB input voltage.

**• Internal Synchronized Slope Compensation**

Built-in slope compensation circuit adds voltage ramp onto the current sense input voltage for PWM generation. This greatly improves the close loop stability at CCM and prevents the sub-harmonic oscillation and thus reduces the output ripple voltage.

**• Drive**

The power MOSFET is driven by a dedicated gate driver for power switch control. Too weak the gate drive strength results in higher conduction and switch loss of MOSFET while too strong gate drive results the compromise of EMI. A good trade off is achieved through the built-in totem pole gate design with right output strength and dead time control. The low idle loss and good EMI system design is easier to achieve with this dedicated control scheme.

**• Protection Controls**

Good power supply system reliability is achieved with auto-recovery protection features including Cycle-by-Cycle current limiting (OCP), Over Load Protection (OLP), CS floating protection, and Under Voltage Lockout on VDD (UVLO), over voltage protection (OVP). With GlobalSemi Proprietary technology, the OCP is line voltage compensated to achieve constant output power limit over the universal input voltage range.

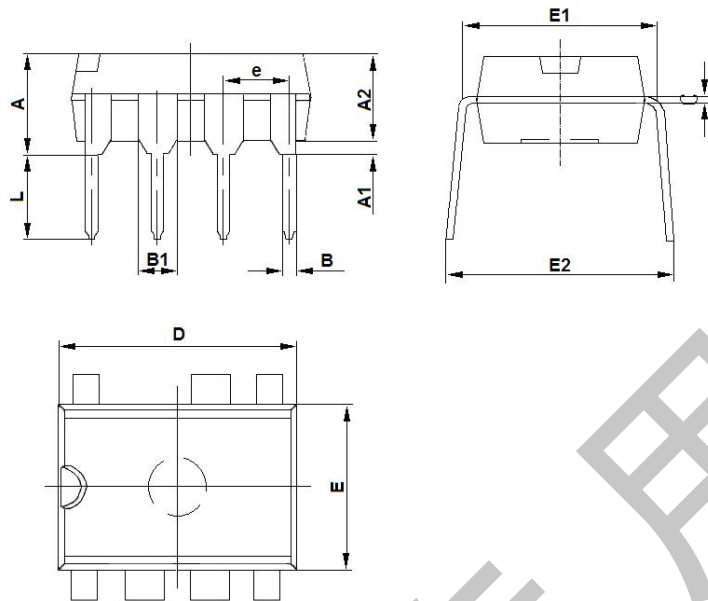
At overload condition when FB input voltage exceeds power limit threshold value for more than TD\_PL, control circuit reacts to shut down the switch. Switch restarts when VDD voltage drops below UVLO limit.

# G1569-01

## High Performance Current Mode PWM Switch

### 8. Package Information

DIP7:



Symbol	Dimension in Millimeters		Dimensions in Inches	
	Min	Max	Min	Max
A	3.710	5.334	0.146	0.210
A1	0.381		0.015	
A2	2.921	4.953	0.115	0.195
B	0.350	0.650	0.014	0.026
B1	1.524(BSC)		0.06(BSC)	
C	0.200	0.360	0.008	0.014
D	9.000	10.16	0.354	0.400
E	6.096	7.112	0.240	0.280
E1	7.320	8.255	0.288	0.325
e	2.540(BSC)		0.1(BSC)	
L	2.921	3.810	0.115	0.150
E2	7.620	10.92	0.300	0.430

#### IMPORTANT NOTICE

Data and specifications subject to change without notice.

This product has been designed and qualified for Industrial Level and Lead-Free.

Qualification Standards can be found on GS's Web site.

Global Semiconductor HEADQUARTERS:

Scotia Centre, 4th Floor, P.O.Box 2804, George Town, Grand Cayman KY1-1112, Cayman

Visit us at [www.globalsemi-group.com](http://www.globalsemi-group.com) for sales contact information.

